

PRICE LIST 2021

SECOLITE® CEMENT BOARDS
COMPLIMENTARY PRODUCTS



SECO LITE®

SECOLITE® CEMENT BOARD

THE FUTURE OF CEMENT BOARD

SECOLITE® Cement Board is a light-weight board made of Portland cement, aggregates and other inorganic materials, reinforced on both sides with embedded glass fiber.

SECOLITE® Cement Board is ideal for use in demanding environments. It can be used in both indoor and outdoor applications.



- **Water resistant**
- **Mold resistant**
- **Weather-proof and durable**
- **Impact resistant and dimensionally stable**
- **Does not rot**
- **Easy to cut, handle and install**
- **Non-combustible according to EN13501-1**





APPLICATIONS & INSTALLATION

- **SECOLITE® Cement Board is used in the construction of interior and exterior walls, ceilings and floors.**
- **SECOLITE® Cement Board can be finished directly, used as a substrate for tiles and other decorative coatings or as an integral component of ETICS.**
- **SECOLITE® Cement Board can be installed vertically or horizontally on steel or wood framing. It is easily cut to size with a utility knife and is fastened to the studs with SECOLITE® alkali resistant cement board screws.**
- **Joints are formed using SECOLITE® Joint Adhesive and can be finished with SECOLITE® reinforcing tape and SECOLITE® Joint Filler.**




STORAGE AND TRANSPORT

For truck transportation, SECOLITE® Cement Boards are delivered on pallets up to 62, 40 and 34 for product thicknesses of 8, 12.5 and 15 mm. For container transport pallet sizes may go up to 82, 51 and 42 boards for product thicknesses of 8, 12.5 and 15 mm. A forklift capable to safely lift 2,000 kg should be used to lift and move pallets of boards. Ensure that storage areas can support the weight of the pallets and boards (up to 1900 kg/pallet). Care must be taken to ensure that stacks are stable when pallets are stored on top of one another. Do not stack pallets with SECOLITE® Cement Board more than 3.5 m total height. SECOLITE® Cement Boards should be stored in a dry location and protected from prolonged exposure to excess moisture. Allow boards to acclimate to ambient moisture and humidity conditions prior to installation.

SECOLITE® CEMENT BOARDS


SCL 8



Dimensions*	Tech. Data		Truck 25 tons load			40'DV			Price €/m ² (ex works)
	kg/m ²	m ² / board	boards/ pal.	boards/ truck	m ² / truck	boards/ pal.	boards	m ² / cont.	
8x1800x900	8,6	1,62	56	1 745	2 827	56	1 815	2 940	12,09 €
8x1800x1200	8,6	2,16	56	1 310	2 829	56	1 362	2 942	11,76 €
8x1800x1250	8,6	2,25	56	1 259	2 832	56	1 309	2 945	11,92 €
8x2000x900	8,6	1,80	56	1 563	2 814	56	1 626	2 926	12,09 €
8x2000x1200	8,6	2,40	56	1 182	2 836	56	1 229	2 950	11,76 €
8x2000x1250	8,6	2,50	56	1 130	2 826	56	1 176	2 939	11,92 €
8x2400x900	8,6	2,16	56	1 303	2 814	56	1 355	2 926	12,09 €
8x2400x1200	8,6	2,88	56	985	2 836	56	1 024	2 950	11,76 €
8x2400x1250	8,6	3,00	56	946	2 839	56	984	2 953	11,92 €

*we can do other dimensions on request


SCL 12.5



Dimensions*	Tech. Data		Truck 25 tons load			40'DV			Price €/m ² (ex works)
	kg/m ²	m ² / board	boards/ pal.	boards/ truck	m ² / truck	boards/ pal.	boards	m ² / cont.	
12.5x1800x900	13,5	1,62	36	1 112	1 802	36	1 157	1 874	12,28 €
12.5x1800x1200	13,5	2,16	36	834	1 802	36	868	1 875	11,95 €
12.5x1800x1250	13,5	2,25	36	802	1 804	36	834	1 877	12,12 €
12.5x2000x900	13,5	1,80	36	996	1 793	36	1 036	1 865	12,28 €
12.5x2000x1200	13,5	2,40	36	753	1 807	36	783	1 880	11,95 €
12.5x2000x1250	13,5	2,50	36	720	1 801	36	749	1 873	12,12 €
12.5x2400x900	13,5	2,16	36	830	1 793	36	863	1 865	12,28 €
12.5x2400x1200	13,5	2,88	36	628	1 807	36	653	1 880	11,95 €
12.5x2400x1250	13,5	3,00	36	603	1 809	36	432	1 296	12,12 €

*we can do other dimensions on request

SCL 15



Dimensions*	Tech. Data		Truck 25 tons load			40'DV			Price €/m ² (ex works)
	kg/m ²	m ² / board	boards/ pal.	boards/ truck	m ² / truck	boards/ pal.	boards	m ² / cont.	
15x1800x900	16,2	1,62	30	927	1 501	30	660	1 069	14,66 €
15x1800x1200	16,2	2,16	30	695	1 502	30	510	1 102	14,26 €
15x1800x1250	16,2	2,25	30	668	1 504	30	480	1 080	14,46 €
15x2000x900	16,2	1,80	30	830	1 494	30	600	1 080	14,66 €
15x2000x1200	16,2	2,40	30	628	1 506	30	450	1 080	14,26 €
15x2000x1250	16,2	2,50	30	600	1 501	30	450	1 125	14,46 €
15x2400x900	16,2	2,16	30	692	1 494	30	510	1 102	14,66 €
15x2400x1200	16,2	2,88	30	523	1 506	30	390	1 123	14,26 €
15x2400x1250	16,2	3,00	30	503	1 508	30	360	1 080	14,46 €

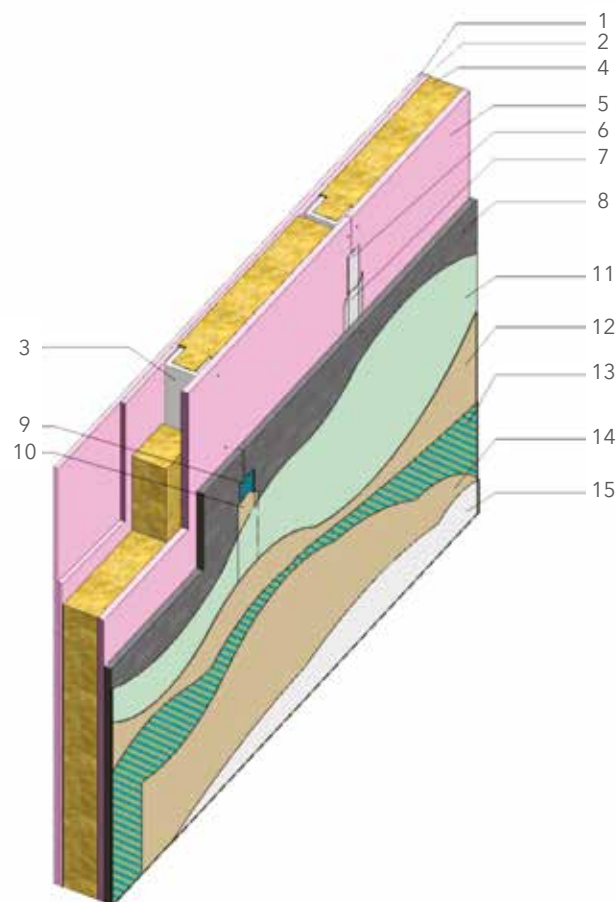
*we can do other dimensions on request

SCOPE AND APPLICATION

A full line of complimentary products and accessories are available for use with SECOLITE® Cement Board. Our offerings include the following SECOLITE® Brand products:

- Steel profiles
- Alkali resistant screws
- Joint adhesive, joint tape and joint filler
- Primer
- Mesh Reinforcement


Example: Use of SECOLITE® products as integrated parts of an interior wall system with 2 hours fire rating.



- | | | | |
|---|--|----|--|
| 1 | Fire rated plasterboard 12.5 mm | 8 | SECOLITE® Cement Board 12.5 mm |
| 2 | Fire rated plasterboard 12.5 mm | 9 | Joint tape |
| 3 | Metal profiles 70 mm width | 10 | Joint filler & skim coat |
| 4 | Mineral insulation wool to fill the cavity | 11 | Primer |
| 5 | Fire rated plasterboard 15 mm | 12 | Apply 3 to 5 mm of joint filler & skim coat |
| 6 | Joint tape | 13 | Reinforcement mesh 1m |
| 7 | Joint filler & skim coat | 14 | Second layer of joint filler & skim coat |
| | | 15 | Paint |

SECOLITE® COMPLIMENTARY PRODUCTS


SCREWS

	Description	Weight / Dimensions	Packing	Min. order quantity	Price
	SECOLITE® Cement Board screws PN. To fix SECOLITE® Cement Board on timber and metal frame works (thickness up to 0,7 mm).	Length: 25 mm; Wall: 15 pcs/m ² for stud spacing 600/625 mm; Ceiling: 25 pcs/m ² for profile spacing 300/312,5 mm	500 pcs/box; 24 boxes/pack; 24 packs/pallet	1 pack = 24 boxes	8,59 €/box
		Length: 40 mm; Wall: 15 pcs/m ² for stud spacing 600/625 mm; Ceiling: 25 pcs/m ² for profile spacing 300/312,5 mm	500 pcs/box; 12 boxes/pack; 24 packs/pallet	1 pack = 12 boxes	11,75 €/box
	SECOLITE® Cement Board screws SD. To fix SECOLITE® Cement Board on metal frame works (thickness from 0,8 to 2 mm).	Length: 40 mm; Wall: 15 pcs/m ² for stud spacing 600/625 mm	250 pcs/box; 24 boxes/pack; 24 packs/pallet	1 pack = 24 boxes	6,60 €/box


JOINT TAPE

	Description	Weight / Dimensions	Packing	Min. order quantity	Price
	For interior and exterior application	125 mm wide; 50 m/roll	1.500 m ² /pallet; 240 rolls/pallet	-	11,59 €/roll


JOINT FILLER & SKIM COAT

	Description	Weight / Dimensions	Packing	Min. order quantity	Price
	Cement based filling material for joints and full-surface skimcoating, interior and exterior application	20 kg/bag; usage is approx. 3 kg/m ² of SECOLITE® Cement Board	60 bags/pallet	1 pallet	13,27 €/bag


JOINT ADHESIVE

	Description	Weight / Dimensions	Packing	Min. order quantity	Price
	For the bonding of SECOLITE® Cement Board in the wall. Not used in the ceiling area	300 ml/cartridge; Usage is approx. 25 ml/m joint	12 cartridges/box	-	5,52 €/cartridge


PRIMER

	Description	Weight / Dimensions	Packing	Min. order quantity	Price
	Ready to use synthetic dispersion. Ensure max. adhesion of render finishes. Highly effective moisture barrier	20 kg/pail; Usage = 450 g/m ²	33 pails/pallet	1 pallet	70,58 €/pail

WATER RESISTIVE BARRIER

	Description	Weight / Dimensions	Packing	Min. order quantity	Price
	Light weight but strong Breather Membrane for exterior wall applications. Excellent water resistance but still high breathability	116 g/m ² ; Width: 1.5 m; Roll: 75 m ² ; Roll weight: 9 kg	60 rolls/pallet	-	175,42 €/roll

REINFORCEMENT MESH

	Description	Weight / Dimensions	Packing	Min. order quantity	Price
	Coating. Applied on Basecoat or Joint Filler & Skim Coat	1.000 mm wide; 160 g/m ² ; 50 m ² /roll	1.500 m ² /pallet; 30 rolls/pallet	-	58,64 €/roll



TERMS AND CONDITIONS

- Payment terms: 100% advance
- Min. order quantities:
 - SECOLITE® Cement board: 1 truck.
 - Complimentary products as shown in the price list table.
- Lead time:
 - Within 2 weeks from payment received for standard dimensions of SECOLITE® Cement Board which includes all products with 12.5 mm thickness and 1,200 mm width.
 - On request for non-standard dimensions of SECOLITE® Cement Board.
 - Complimentary products are available on stock.



PLACACEM, LDA
Zona Industrial de Vagos
LOTE 50 E 52
3840-385 VAGOS
PORTUGAL

T +351 234 109 346
geral@secolite.eu

GPS: 40.547712,-8.717874



secolite.eu